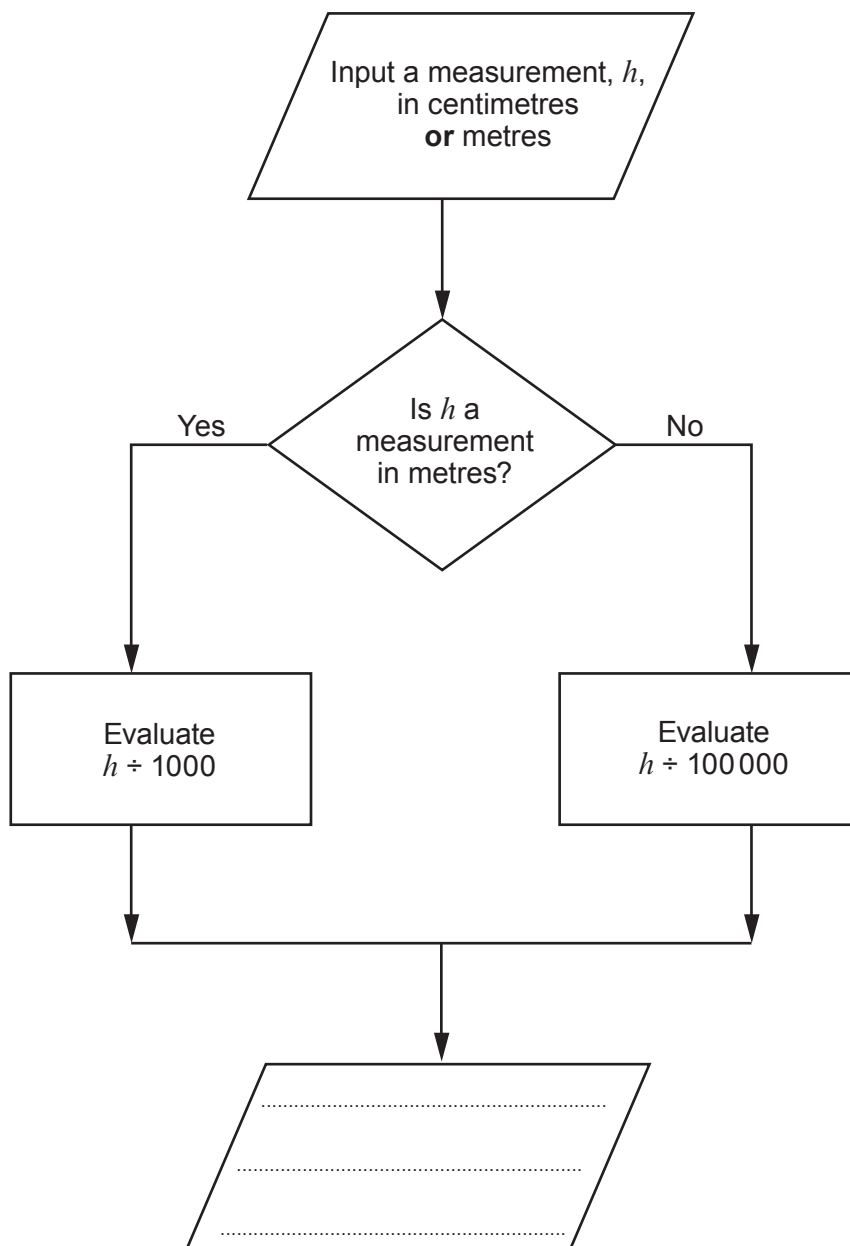


5. (a) The following is a section of a flowchart.



What would this section of the flowchart be used for?
Give an example of what might be written in the output box.

[2]

.....

.....

.....

.....

(b) In the box below construct a section of a flowchart that would:

- Allow input of whole numbers
- Add 1 to any odd number
- Not change even numbers
- Allow the output of only even numbers.

[6]

